

Extra Tunes for Locations not in the Bacon Handbook

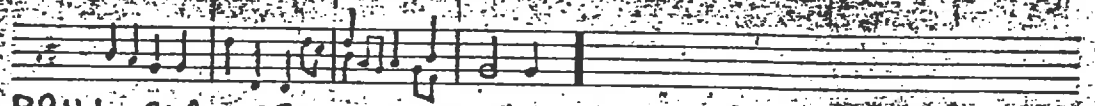
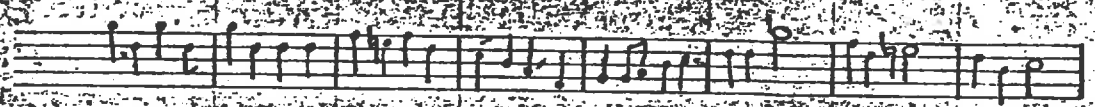
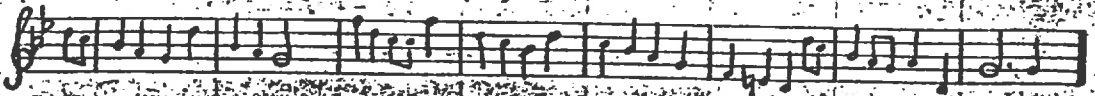
BLACKWELL C# fm T. Gardiner 9.9.09 "BLACKWELL MORRIS" (LONDON PRIDE)



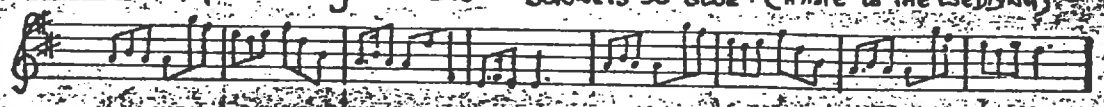
"GREENSLEEVES"



"NELSON'S PRAISE" (PRINCEPS ROYAL)



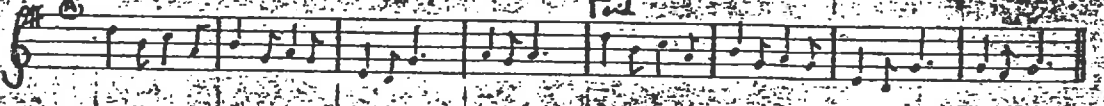
BRILL C# fm C. Binyon 16.3.12 "BONNETS SO BLUE" (HASTE TO THE WEDDING)



"GREENSLEEVES"



"OLD HOG OR NONE"



"PRINCESS ROYAL"

BRILL (cont)

Handwritten musical notation for "PRINCESS ROYAL" on a grand staff. The music is written in treble clef with a key signature of one sharp (F#) and a common time signature (C). It consists of two staves of music.

"SHEPHERD'S HEY"

Handwritten musical notation for "SHEPHERD'S HEY" on a grand staff. The music is written in treble clef with a key signature of one sharp (F#) and a common time signature (C). It consists of two staves of music.

BURFORD - CHURCH CHIME (SHEPHERD'S HEY)

Handwritten musical notation for "BURFORD - CHURCH CHIME (SHEPHERD'S HEY)" on a grand staff. The music is written in treble clef with a key signature of one sharp (F#) and a common time signature (C). It consists of two staves of music.

FILKINS - Butterworth for J. Pougher July 1912 "BOBBY AND JOAN"

Handwritten musical notation for "FILKINS - Butterworth for J. Pougher July 1912 'BOBBY AND JOAN'" on a grand staff. The music is written in treble clef with a key signature of one sharp (F#) and a common time signature (C). It consists of two staves of music.

"CONSTANT BILLY"

Handwritten musical notation for "CONSTANT BILLY" on a grand staff. The music is written in treble clef with a key signature of one sharp (F#) and a common time signature (C). It consists of two staves of music.

Handwritten musical notation for "CUCKOO'S NEST" on a grand staff. The music is written in treble clef with a key signature of one sharp (F#) and a common time signature (C). It consists of two staves of music.

"CUCKOO'S NEST"

Handwritten musical notation for "CUCKOO'S NEST" on a grand staff. The music is written in treble clef with a key signature of one sharp (F#) and a common time signature (C). It consists of two staves of music.

"HEY DIDDLE DIT"

Handwritten musical notation for "HEY DIDDLE DIT" on a grand staff. The music is written in treble clef with a key signature of one sharp (F#) and a common time signature (C). It consists of two staves of music.

"HIGHLAND MARY"

Handwritten musical notation for "HIGHLAND MARY" on a grand staff. The music is written in treble clef with a key signature of one sharp (F#) and a common time signature (C). It consists of two staves of music.

Handwritten musical notation for "HIGHLAND MARY" on a grand staff. The music is written in treble clef with a key signature of one sharp (F#) and a common time signature (C). It consists of two staves of music.

MAD OF THE MILL"

FILKINS (GMC)

Musical notation for "MAD OF THE MILL" with a treble clef, a key signature of one sharp (F#), and a common time signature (C). The melody is written on a single staff with various note values and rests.

OLD WOMAN TOSSED UP"

Musical notation for "OLD WOMAN TOSSED UP" with a treble clef, a key signature of one sharp (F#), and a common time signature (C). The melody is written on a single staff.

PRINCESS ROYAL"

Musical notation for "PRINCESS ROYAL" consisting of three staves. The first staff has a treble clef, a key signature of one sharp (F#), and a common time signature (C). The second and third staves continue the melody with various rhythmic patterns.

NOKE Gt from J. Somerton 17.4.09 "BALANCE OF STRAW"

Musical notation for "NOKE Gt from J. Somerton 17.4.09 'BALANCE OF STRAW'" with a treble clef, a key signature of one sharp (F#), and a common time signature (C). The melody is written on a single staff.

"BONNY GREEN GARTERS"

Musical notation for "BONNY GREEN GARTERS" with a treble clef, a key signature of one sharp (F#), and a common time signature (C). The melody is written on a single staff.

GREENSLEEVES" Gt from D. Shirley 17.4.09

Musical notation for "GREENSLEEVES" Gt from D. Shirley 17.4.09 with a treble clef, a key signature of one sharp (F#), and a common time signature (C). The melody is written on a single staff.

NORTH LEIGH Gt from W. Parlett 16.5.10 "PRINCESS ROYAL"

Musical notation for "NORTH LEIGH Gt from W. Parlett 16.5.10 'PRINCESS ROYAL'" with a treble clef, a key signature of one sharp (F#), and a common time signature (C). The melody is written on a single staff.

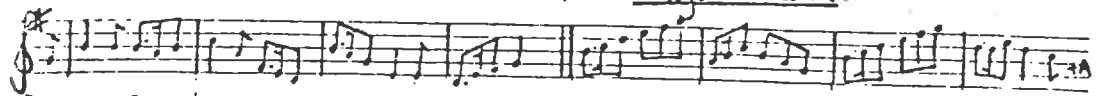
Musical notation for "NORTH LEIGH Gt from W. Parlett 16.5.10 'PRINCESS ROYAL'" (continued) with a treble clef, a key signature of one sharp (F#), and a common time signature (C). The melody is written on a single staff.

Musical notation for "NORTH LEIGH Gt from W. Parlett 16.5.10 'PRINCESS ROYAL'" (continued) with a treble clef, a key signature of one sharp (F#), and a common time signature (C). The melody is written on a single staff.

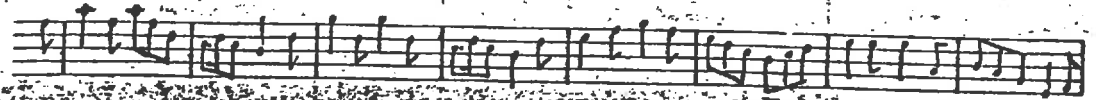
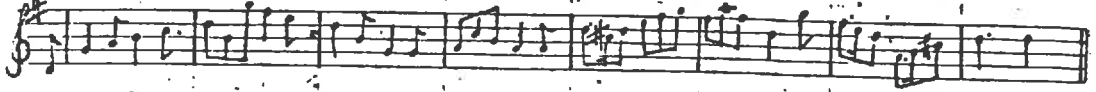
SHIPTON-ON-STOUR Gt from H. Stinch "CUCKOO'S NEST"

Musical notation for "SHIPTON-ON-STOUR Gt from H. Stinch 'CUCKOO'S NEST'" with a treble clef, a key signature of one sharp (F#), and a common time signature (C). The melody is written on a single staff.

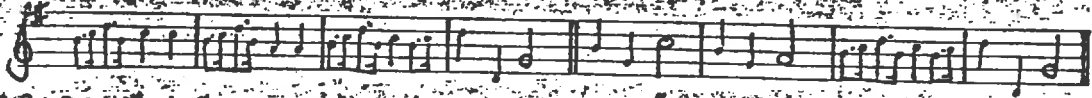
Burthen for Sings at Oxford. "CONSTANT BILLY" - village unknown.



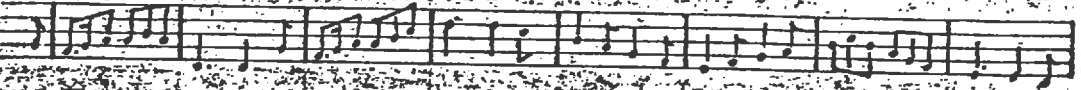
"JOCKEY"



"SHEPHERD'S KEY"



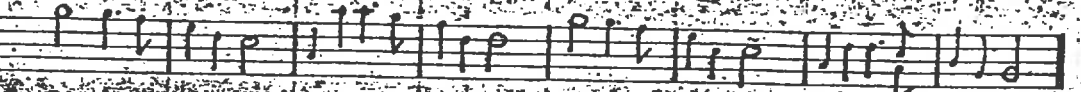
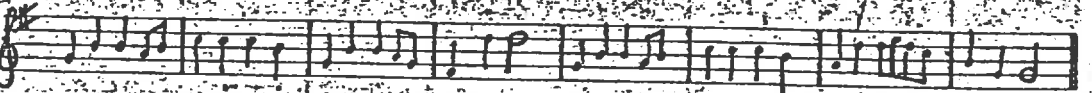
"SHIPTON-ON-STOUR" 4th - 1. March 19 and 23. 8. 09 "BONNETS SO BLUE"



"CONSTANT BILLY"



"CUCKOO'S NEST" (BUFFOON)



"GREENSLEEVES"



"FLOWERS OF EDINBURGH"

SHIPTON (cont.)

Handwritten musical notation for the piece "Flowers of Edinburgh". It consists of two staves. The first staff begins with a treble clef and a key signature of one sharp (F#). The melody is written in a simple, folk-like style with eighth and sixteenth notes.

"HASTE TO THE WEDDING"

Handwritten musical notation for the piece "Haste to the Wedding". It consists of two staves. The first staff begins with a treble clef and a key signature of one sharp (F#). The melody is characterized by a more rhythmic and dance-like feel, using many eighth and sixteenth notes.

"HIGHLAND MARY"

Handwritten musical notation for the piece "Highland Mary". It consists of two staves. The first staff begins with a treble clef and a key signature of one sharp (F#). The melody is a classic Scottish folk tune, featuring a mix of eighth and sixteenth notes.

"JOCKEY TO THE FAIR"

Handwritten musical notation for the piece "Jockey to the Fair". It consists of two staves. The first staff begins with a treble clef and a key signature of one sharp (F#). The melody is a well-known Scottish folk tune, featuring a mix of eighth and sixteenth notes.

"LUMPS OF PLUM PUDDING"

Handwritten musical notation for the piece "Lumps of Plum Pudding". It consists of two staves. The first staff begins with a treble clef and a key signature of one sharp (F#). The melody is a simple, folk-like tune with a mix of eighth and sixteenth notes.

"SCOTCHER'S HOY"

Handwritten musical notation for the piece "Scotcher's Hoy". It consists of two staves. The first staff begins with a treble clef and a key signature of one sharp (F#). The melody is a simple, folk-like tune with a mix of eighth and sixteenth notes.

"OLD MOLLY OXFORD"

SHIPSON (cont)

Handwritten musical notation for the first piece, consisting of two staves. The first staff begins with a treble clef and a key signature of one sharp (F#). The melody is written in a simple, folk-like style.

"OLD WOMAN ROLLED UP IN A BLANKET"

Handwritten musical notation for the second piece, consisting of two staves. The first staff begins with a treble clef and a key signature of one sharp (F#).

"PRINCESS ROYAL"

Handwritten musical notation for the third piece, consisting of two staves. The first staff begins with a treble clef and a key signature of one sharp (F#).

Handwritten musical notation for the third piece, consisting of two staves. The second staff continues the melody from the first staff.

Handwritten musical notation for the third piece, consisting of two staves. The third staff continues the melody from the second staff.

"SHERBORNE JIG"

Handwritten musical notation for the fourth piece, consisting of two staves. The first staff begins with a treble clef and a key signature of one sharp (F#).

J=J.

Handwritten musical notation for the fourth piece, consisting of two staves. The second staff continues the melody from the first staff.

"TRUMAN"

Handwritten musical notation for the fifth piece, consisting of two staves. The first staff begins with a treble clef and a key signature of one sharp (F#).

Handwritten musical notation for the fifth piece, consisting of two staves. The second staff continues the melody from the first staff.

Princess Royal - Lasse - Capri

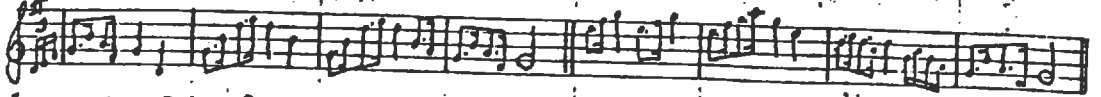
Handwritten musical notation for the sixth piece, consisting of two staves. The first staff begins with a treble clef and a key signature of one sharp (F#).

Handwritten musical notation for the sixth piece, consisting of two staves. The second staff continues the melody from the first staff.

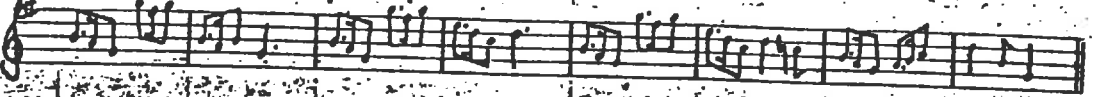
WITHINGTON . Cf. from T. Danley 30.8.09 "GREENSLAVES"



"HUNT THE SQUIRREL"



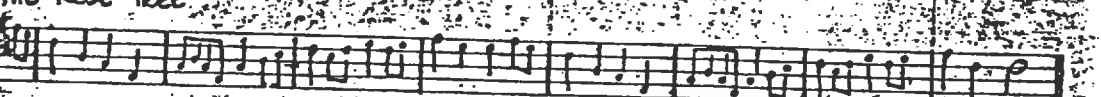
"LUMPS OF PLUM ADDING"



"PRINCESS ROYAL"

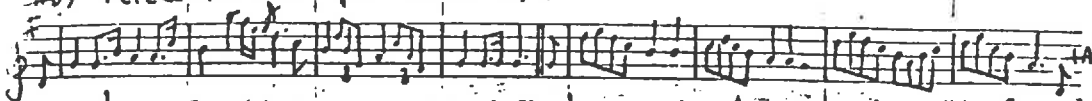


"THE ROSE TREE"

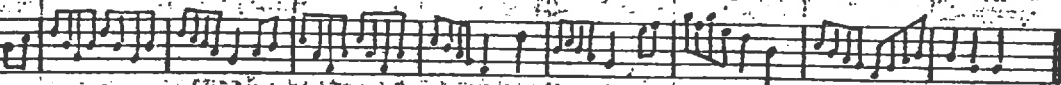
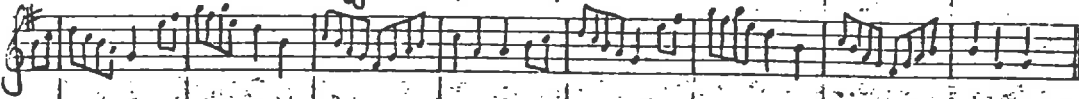


TUNES FOR SOMERSET MORRIS

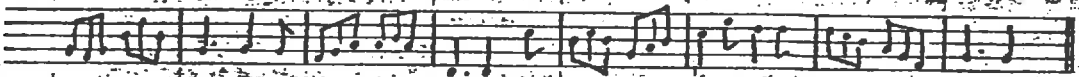
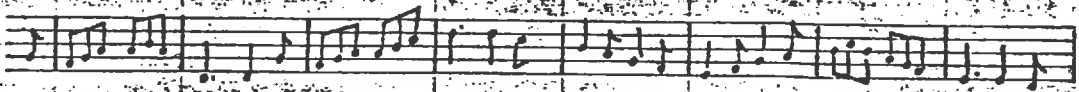
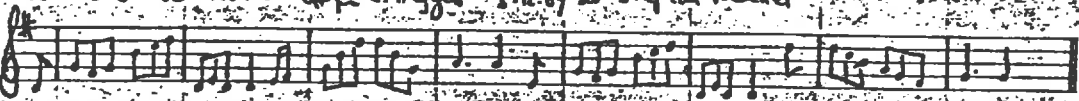
BY PETERSHAM'S REEL. from 24 Dances as performed at Bath 1764.



CUCKOO'S NEST after J. Higgins 18.9.07 at Shepton Mallet



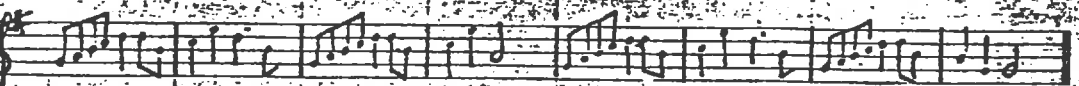
BONNETS SO RARE after J. Higgins 2.12.07 at Shepton Mallet



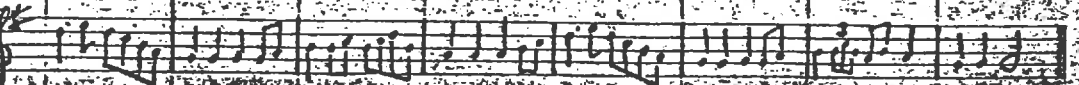
GREENSLEEVES ditto 15.9.07



NORTON HORNPIPE ditto



HORNPIPE ditto





BRICKS AND MORTAR C#m H. Cave at Nettlebridge 14.9.07

Sunglet (cut)

Handwritten musical notation for 'Bricks and Mortar' in C#m, 4/4 time. The piece consists of two staves of music. The melody is written on a treble clef staff, and the accompaniment is on a bass clef staff. The music features a mix of eighth and sixteenth notes, with some triplet-like patterns.

GREENSLAVES ditto

Handwritten musical notation for 'Greenslaves' in C#m, 4/4 time. The piece consists of two staves of music. The melody is written on a treble clef staff, and the accompaniment is on a bass clef staff. The music features a mix of eighth and sixteenth notes, with some triplet-like patterns.

FOUR HAND REEL ditto

Handwritten musical notation for 'Four Hand Reel' in C#m, 4/4 time. The piece consists of two staves of music. The melody is written on a treble clef staff, and the accompaniment is on a bass clef staff. The music features a mix of eighth and sixteenth notes, with some triplet-like patterns.

STEP DANCE ditto

Handwritten musical notation for 'Step Dance' in C#m, 4/4 time. The piece consists of two staves of music. The melody is written on a treble clef staff, and the accompaniment is on a bass clef staff. The music features a mix of eighth and sixteenth notes, with some triplet-like patterns.

JIG ditto

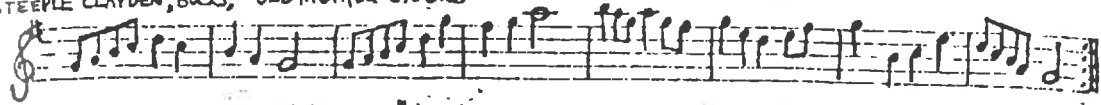
Handwritten musical notation for 'Jig' in C#m, 4/4 time. The piece consists of two staves of music. The melody is written on a treble clef staff, and the accompaniment is on a bass clef staff. The music features a mix of eighth and sixteenth notes, with some triplet-like patterns.

FLOWERS OF EDINBURGH C#m W. Price at Nettlebridge 29.12.09

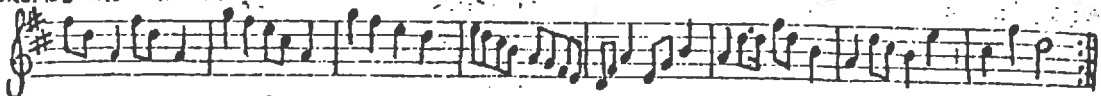
Handwritten musical notation for 'Flowers of Edinburgh' in C#m, 4/4 time. The piece consists of two staves of music. The melody is written on a treble clef staff, and the accompaniment is on a bass clef staff. The music features a mix of eighth and sixteenth notes, with some triplet-like patterns.

MISCELLANEOUS

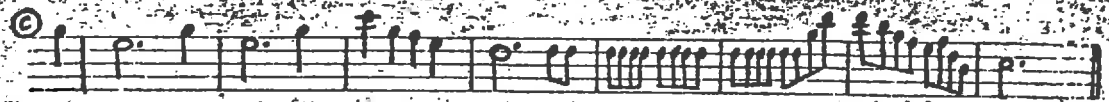
STEEPLE CLAYDEN, BUCKS, "OLD MOTHER OXFORD"



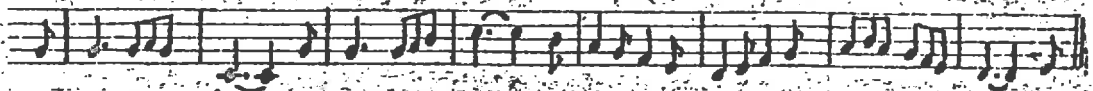
BROMSBOROUGH HEATH "3 HAND REEL"



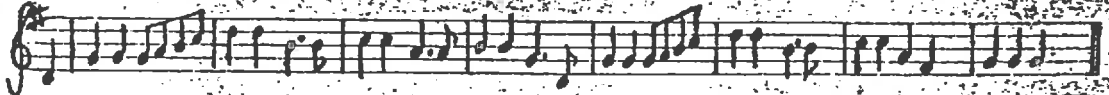
EVESHAM "STICK DANCE"



"HANDKERCHIEF DANCE"



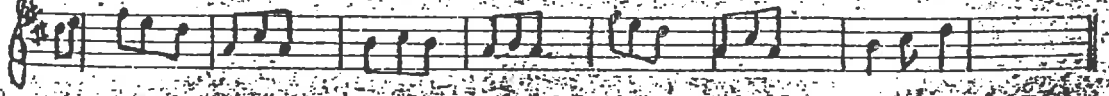
WHITE LADIES ASTON



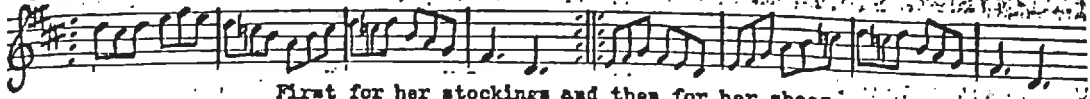
MUCH WEN LOCK! "Jig"



SUSSEX - "OVER THE STICKS"



No 10 BONNY GREEN GARTERS



First for her stockings and then for her shoes  
And then for my bonny green garters

BALANCE OF STRAW



A man's very weak as can't balance a straw  
He must first get his bread and then wag his jaw.

WITTINGTON

LUMPS OF PLUM PUDDING



B



PRINCESS ROYAL



B



C

